

SNOHOMISH RIVER CORPORATE PARK

3501 - 28th Place NE • Everett • Washington

FOR SALE

± 17.23 Acres
Industrial Land



Snohomish River Corporate Park is located in the highly desirable City of Everett industrial market in close proximity to Boeing, Paine Field, and the Port of Everett. The Site is ideal for manufacturing and distribution, especially aerospace companies supplying Boeing's primary assembly plant.



Highlights

Location

- Proximity to the Port of Everett, Paine Field, and Boeing's Everett plant
- Immediate highway access to SR-529

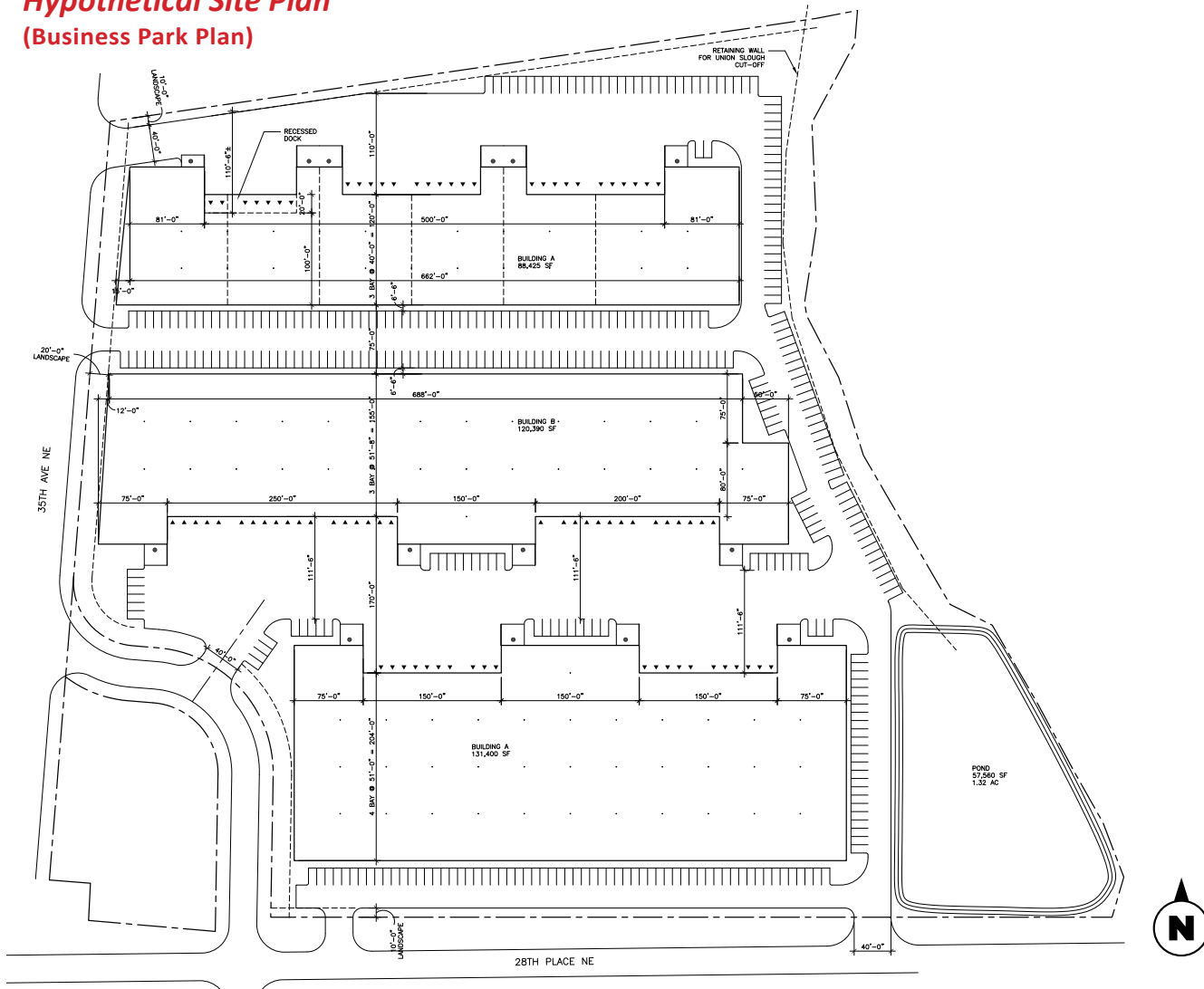
Site Features

- Visibility from SR-529
- M-2 Heavy Industrial zoning allows for a wide range of permitted uses

Utility Infrastructure

- Electric: Snohomish County PUD
- Gas: Puget Sound Energy
- Water: City of Everett

Hypothetical Site Plan (Business Park Plan)



WILMA WARSHAK, SIOR
MANAGING PARTNER

P (206) 838 - 5492 | C (206) 409 - 1432 | wilma.warshak@wa-rea.com

ZANE D. SHIRAS, CCIM

P (206) 838 - 5493 | C (206) 724 - 7120 | zane.shiras@wa-rea.com

1725 Westlake Ave N, Suite 210, Seattle WA 98109 | Washington Real Estate Advisors, LLC | wa-rea.com | P 206 383-5492

All information in this document including, without limitation, all descriptions, dimensions, and references to condition, use and occupation and other details relating to the advertised property ("Information") has been obtained from various sources that Washington Real Estate Advisors, LLC ("WA-REA") believes to be reliable. However, such Information is provided "as is", with no guarantee of completeness or accuracy, and without warranty of any kind, express or implied, including, without limitation, any warranties of performance, merchantability and fitness for a particular purpose. Potential purchasers or tenants are not entitled to rely on any of the Information and should satisfy themselves by appropriate inspections, surveys, searches, inquiries or otherwise with regard to the accuracy of such Information. In no event will WA-REA, or its owners, agents or employees be liable to you or anyone else for any decision made or action taken in reliance on the Information or for any consequential, special or similar damages, even if advised of the possibility of such damages. This document is for informational purposes only and is not an offer to sell or lease.